

Flow cytometry

Histology platform

Fluorescence microscopy

Holographic  
microscopy

Scanning tunneling  
microscopy

Microinjection  
platform

BD Pathway 855

Confocal microscopy

Electron microscopy

Atomic Force Microscopy

Our research is supported by

## DESCRIPTION

The MORPH-IM platform (Morphology & Imaging) provides expert guidance and support to the UNamur staff and to external users from sample preparation to image acquisition and analysis. Our major asset is to be able to link different types of imaging, thanks to state-of-the-art equipment and constant development. The platform enables the observation as well as the quantification of different parameters for both biological as well as materials samples including nanofilms and nanoobjects.

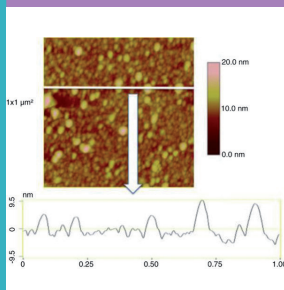
## EXPERTISE

**LIFE SCIENCES:** life imaging (confocal or holographic microscopy), (immuno)-histology, (immuno)-fluorescence labeling for microscopy or flow cytometry, scanning and transmission electron microscopy, microinjection platform

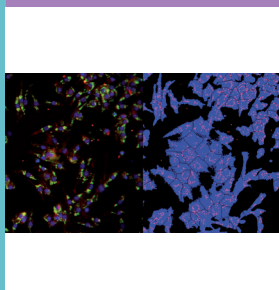
**MATERIALS SCIENCES:** scanning and transmission electron microscopy, atomic force microscopy, scanning tunneling microscopy

## EQUIPMENT

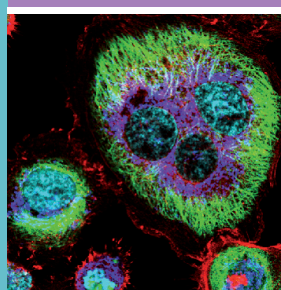
### Atomic Force Microscopy



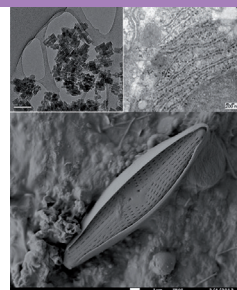
### BD Pathway 855



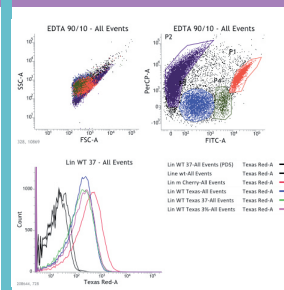
### Confocal microscopy



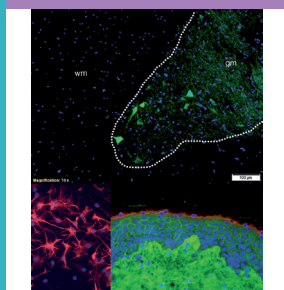
### Electron microscopy



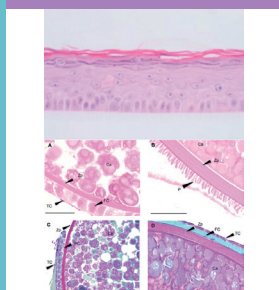
### Flow cytometry



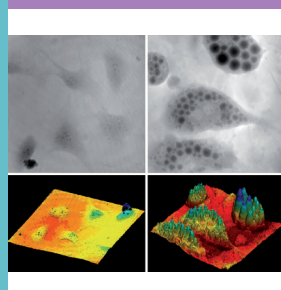
### Fluorescence microscopy



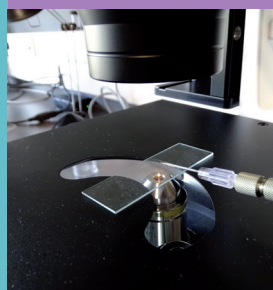
### Histology platform



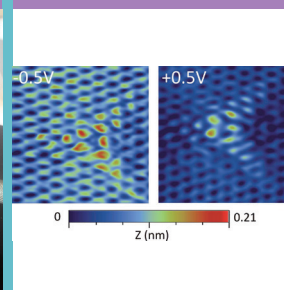
### Holographic microscopy



### Microinjection platform



### Scanning tunneling microscopy



**ACADEMIC CONTACT:** Prof. Carine MICHIELS & Dr Jean-François COLOMER

**GENERAL CONTACT:** [platforms@unamur.be](mailto:platforms@unamur.be)

More info: [platforms.unamur.be/platforms/morphim](https://platforms.unamur.be/platforms/morphim)